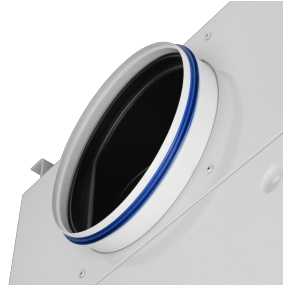


...



CEILING MOUNTED PARTICULATE FILTER, VARIANT TFC-SC WITH AIR TERMINAL DEVICE TDF



CIRCULAR SPIGOT WITH LIP SEAL



INTERNAL MEASURING TUBE TO SAMPLE PARTICLES FOR MEASUREMENT



AIR-TIGHT SHUT-OFF DAMPER, MANUALLY ADJUSTABLE

Low-leakage shut-off damper, manually adjustable



DAMPER BLADE FOR VOLUME FLOW RATE BALANCING (OPTIONAL)

TFC

FOR CRITICAL AIR CLEANLINESS AND CRITICAL HYGIENE REQUIREMENTS, SUITABLE FOR CEILING INSTALLATION

Ceiling mounted particulate filters as a final filter stage with Mini Pleat filter panels for the separation of suspended particles. Used in medicine, biology, the pharmaceuticals industry, and sensitive technical areas.

- Easy, time-saving and secure filter change, can be completed by one person due to special press-in frame
- Robust, welded construction
- Compact construction, suitable for low ceilings, integration with all clean room ceiling systems of various manufacturers
- Various air terminal devices to ideally meet individual requirements
- Horizontal (circular, rectangular) or vertical (circular) connection
- Choice of low-leakage shut-off damper or volume flow limiter for horizontal connection
- Equipment for differential pressure measurement, sealing integrity testing, and particle sampling for measurement
- For air cleanliness classes 5 to 8 according to ISO 14644-1
- Meets the hygiene requirements of VDI 6022
- Leakage class: DIN EN 1886 L1, DIN EN 15727 class D



TESTED TO VDI 6022

Tested to VDI 6022

General information

Application

- articulate filter air terminal device for ceiling installation as a final filter stage and for air distribution
- Fitting of filter elements for the separation of suspended particles such as aerosols, toxic dusts, viruses, bacteria from the supply or extract air.

Special features

- Compact construction
- Easy operation
- High operational reliability

Classification

- Variants SC, TC, and SR conform to hygiene requirements

Nominal sizes

- 400, 500, 600, 625, 680 [mm]

Construction

- SPC: Powder-coated steel, RAL 9010, pure white
- STA: Stainless steel (only for SC, TC, SR)

Parts and characteristics

- Pneumatic actuator: control pressure 0.6 – 1.0 bar
- Electric actuator: mains connection 24 – 240 V, 50 Hz
- Volume flow limiter: factory set to a reference flow rate, can be readjusted within a volume flow rate range of > 5 : 1
- Clamping mechanism with 2 fixing points for filter elements; 4 fixing points as an option
- Sealing integrity test facility for checking the filter function
- Pressure measurement points to monitor the differential operating pressure
- Casing made of either sheet steel, powder-coated RAL 9010, pure white, or of stainless steel for variants SC, TC and SR
- Diffusers made of sheet steel, powder-coated RAL 9010, pure white (types DLQ, FD, TDF, VDW, DLQLF, DLQL), of anodised aluminium sections (type ADLQ), or of stainless steel (type FDF)
- Diffuser made of sheet steel, powder-coated RAL 9010 (pure white, matt); type PCD with internal part made of PP plastic, RAL 9010 (pure white)
- Diffuser made of high-quality ABS plastic, RAL 9010 (pure white), type AIRNAMIC
- Hygiene meets the requirements of VDI 6022, VDI 3803, DIN 1946 Part 4, ÖNORM H 6021 and ÖNORM H 6020, SWKI VA 104-01 and SWKI 99-3, and EN 13779

Classification

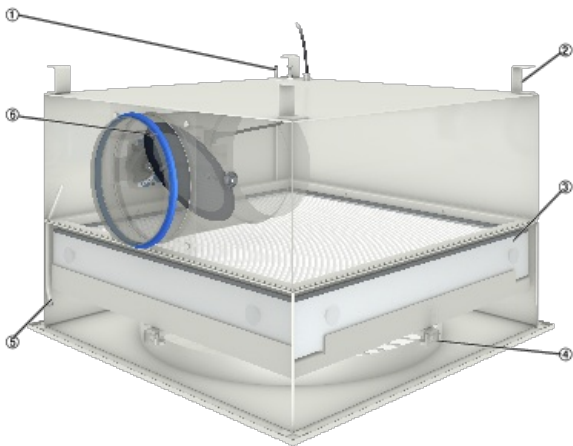
- Variants SC, TC, and SR conform to hygiene requirements

TEKNISK INFORMATION

Function, Specification text, Order code



Schematic illustration of TFC-SCBR0



- ① Top pressure measurement point
- ② Top suspension
- ③ Filter element with flat seal
- ④ Clamping mechanism for the filter element
- ⑤ Internal measuring tube
- ⑥ Spigot with lip seal

Particulate filter air terminal device type TFC for ceiling installation as final filter stage and for air distribution. Fitting of filter elements for the separation of suspended particles such as aerosols, toxic dusts, viruses and bacteria from the supply or extract air.

Casing with side entry or top entry spigot. As standard, ceiling mounted particulate filters with circular spigots are fitted with a lip seal. With optional manually adjustable low-leakage shut-off damper, pneumatic or electric actuator, or volume flow limiter.

The filter elements are pressed into place by an installation subframe with two or four (optional) fixing points. As standard, the casings are equipped with a sealing integrity test facility, internal measuring tube, and pressure measurement point for monitoring the operating differential pressure. Suspension and pressure measurement points either at the side or at the top. For fitting Mini Pleat filter panels with a flat seal or a fluid seal. Leakage test for each casing.

Special features

- Compact construction
- Easy operation
- High operational reliability

Materials and surfaces

- Casing made of either sheet steel, powder-coated RAL 9010, pure white, or of stainless steel for variants SC, TC and SR
- Diffusers made of sheet steel, powder-coated RAL 9010, pure white (types DLQ, FD, TDF, VDW, DLQLF, DLQL), of anodised aluminium sections (type ADLQ), or of stainless steel (type FDF)
- Diffuser made of sheet steel, powder-coated RAL 9010 (pure white, matt); type PCD with internal part made of PP plastic, RAL 9010 (pure white)
- Diffuser made of high-quality ABS plastic, RAL 9010 (pure white), type AIRNAMIC

Construction

- SPC: Steel, powder-coated RAL 9010, pure wh
- STA: Stainless steel (only for SC, TC, SR)

Options

- D: Spigot diameter
- M: Damper unit for volume flow rate balancing
- 2: Installation subframe with 2 fixing points
- 4: Installation subframe with 4 fixing points
- T: Top suspension and measurement points
- S: Side suspension and measurement points

TFC	-	SC	-	SPC	-	VDW	/	600 x 24	x	248	x	344	/	M	/	2	/	S	/	F
1		2		3		4		5		6		7		8		9		10		11

1 Type
TFC Ceiling mounted particulate filters

2 Variant
Side entry circular spigot,
SC
SC00H Shut-off damper, manually adjustable
SCTN0 Shut-off damper with pneumatic actuator
SCBR0 Shut-off damper with electric actuator 24 – 240 V AC
SCVFL with volume flow limiter
TC Top entry circular spigot
SR Side entry rectangular spigot

3 Casing material
SPC Steel, powder-coated, RAL 9010, pure white
STA Stainless steel

4 Air terminal device
No entry required: None

ADLQ
DLQ
FD
TDF
FDF
DLQLF
DLQL
VDW
PCD
AIRNAMIC

5 Nominal size [mm]
ADLQ, DLQ, FD, TDF, FDF, DLQLF, DLQL

400
500
600
625
680

VDW
400 × 16
500 × 24
600 × 24
625 × 24
625 × 48
680 × 24
680 × 54

PCD
600
625

AIRNAMIC
600
625

6 Spigot diameter [mm]
D

7 Casing height [mm]
G1

8 Damper unit
No entry required: None
M Damper unit for volume flow rate balancing (only for TFC-SC-SPC and TFC-TC-SPC)

9 Fixing points
2 Installation subframe with 2 fixing points
4 Installation subframe with 4 fixing points (not for SC00H)

10 Suspension/measurement points
T Top arrangement
S Side arrangement

11 Flange width [mm]
No entry required: Standard
F 10 – 55 mm

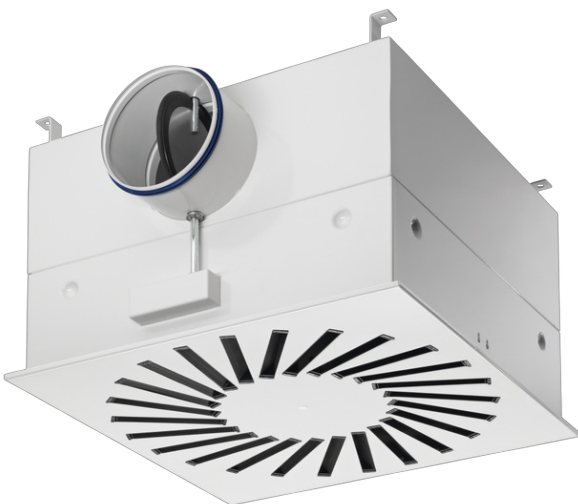


Ceiling mounted particulate filter, variant TFC-SC with air terminal device AIRNAMIC



- Casing with circular spigot
- Side entry spigot

Ceiling mounted particulate filter, variant TFC-SC00H with air terminal device VDW



- Casing with circular spigot
- Side entry spigot
- Shut-off damper, manually adjustable

Ceiling mounted particulate filter, variant TFC-SCTN0 with air terminal device DLQLF



- Casing with circular spigot
- Side entry spigot
- Shut-off damper with pneumatic actuator
- Control pressure 0.6 to 1.0 bar

Ceiling mounted particulate filter, variant TFC-SCBR0 with air terminal device FD



- Casing with circular spigot
- Side entry spigot
- Shut-off damper with electric actuator
- Supply voltage 24 to 240 V AC

Ceiling mounted particulate filter, variant TFC-SCVFL with air terminal device TDF



- Casing with circular spigot
- Side entry spigot
- Volume flow limiter, Type VFL
- Factory set to a reference volume flow rate
- Can be adjusted within a volume flow rate range of >5 : 1

Ceiling mounted particulate filter, variant TFC-TC with air terminal device PCD



- Casing with circular spigot
- Top entry spigot

Ceiling mounted particulate filter, variant TFC-SR
with air terminal device DLQ



- Casing with rectangular spigot
- Side entry spigot

Product specific data TFC-SC

All weights are net, without packaging

①	②	③	④	⑤	⑥	⑦	⑧	⑨	⑩					
TFC	VDW	B × H × T	ØD	G ₁	K	M	J	L	F	U	S	G	kg	
400	400 × 16	345 × 345 × 78/91	158	299	398	371	388	330	10	135	69	189	17	
400	400 × 16	345 × 345 × 78/91	198	299	398	371	388	330	10	135	69	189	17	
400	400 × 16	345 × 345 × 150	158	371	398	371	388	330	10	135	141	261	17	
400	400 × 16	345 × 345 × 150	198	371	398	371	388	330	10	135	141	261	17	
500	500 × 24	435 × 435 × 78/91	158	294	498	461	488	420	15	135	64	184	21	
500	500 × 24	435 × 435 × 78/91	198	294	498	461	488	420	15	135	64	184	21	
500	500 × 24	435 × 435 × 150	158	366	498	461	488	420	15	135	136	256	21	
500	500 × 24	435 × 435 × 150	198	366	498	461	488	420	15	135	136	256	21	
600	600 × 24	535 × 535 × 78/91	248	344	598	561	588	520	15	135	64	209	22	
600	600 × 24	535 × 535 × 78/91	313	409	598	561	588	520	15	135	64	242	22	
600	600 × 24	535 × 535 × 150	248	416	598	561	588	520	15	135	136	281	22	
600	600 × 24	535 × 535 × 150	313	481	598	561	588	520	15	135	136	314	22	
625	625 × 24	575 × 575 × 78/91	248	349	623	601	618	560	10	135	69	214	23	
625	625 × 24	575 × 575 × 78/91	313	414	623	601	618	560	10	135	69	247	23	
625	625 × 48	575 × 575 × 78/91	248	349	623	601	618	560	10	135	69	214	23	
625	625 × 48	575 × 575 × 78/91	313	414	623	601	618	560	10	135	69	247	23	
625	625 × 24	575 × 575 × 150	248	421	623	601	618	560	10	135	141	286	23	
625	625 × 24	575 × 575 × 150	313	486	623	601	618	560	10	135	141	319	23	
625	625 × 48	575 × 575 × 150	248	421	623	601	618	560	10	135	141	286	23	
625	625 × 48	575 × 575 × 150	313	486	623	601	618	560	10	135	141	319	23	
680	680 × 24	610 × 610 × 78/91	248	344	676	636	663	595	15	135	64	209	24	
680	680 × 24	610 × 610 × 78/91	313	409	676	636	663	595	15	135	64	242	24	
680	680 × 54	610 × 610 × 78/91	248	344	676	636	663	595	15	135	64	209	24	
680	680 × 54	610 × 610 × 78/91	313	409	676	636	663	595	15	135	64	242	24	
680	680 × 24	610 × 610 × 150	248	416	676	636	663	595	15	135	136	281	24	
680	680 × 24	610 × 610 × 150	313	481	676	636	663	595	15	135	136	314	24	
680	680 × 54	610 × 610 × 150	248	416	676	636	663	595	15	135	136	281	24	
680	680 × 54	610 × 610 × 150	313	481	676	636	663	595	15	135	136	314	24	

Product specific data TFC-SC for AIRNAMIC

All weights are net, without packaging

①	②	③	④	⑤	⑥	⑦	⑧	⑨	⑩	⑪	⑫	⑬	⑭
TFC	B × H × T	∅D	G ₁	K	M	J	L	F	U	S	G	kg	
600	535 × 535 × 78/91	248	344	598	561	563	520		135	64	209	22	
600	535 × 535 × 78/91	313	409	598	561	563	520		135	64	242	22	
600	535 × 535 × 150	248	416	598	561	564	520		135	136	281	22	
600	535 × 535 × 150	313	481	598	561	564	520		135	136	314	22	
625	575 × 575 × 78/91	248	349	623	601	603	560		135	69	214	23	
625	575 × 575 × 78/91	313	414	623	601	603	560		135	69	247	23	
625	575 × 575 × 150	248	421	623	601	604	560		135	141	286	23	
625	575 × 575 × 150	313	486	623	601	604	560		135	141	319	23	

Product specific data TFC-SC00H

All weights are net, without packaging

①	②	③	④	⑤	⑥	⑦	⑧	⑨	⑩	⑪	⑫	⑬	⑭
TFC	VDW	B × H × T	∅D	G ₁	K	M	J	L	F	S	G	kg	
400	400 × 16	345 × 345 × 78/91	125	428	398	371	388	330	10	54	313	27	
500	500 × 24	435 × 435 × 78/91	160	423	498	461	488	420	15	49	308	31	
600	600 × 24	535 × 535 × 78/91	200	423	598	561	588	520	15	49	308	32	
625	625 × 24	575 × 575 × 78/91	200	428	623	601	618	560	10	54	313	33	
625	625 × 48	575 × 575 × 78/91	200	428	623	601	618	560	10	54	313	33	
680	680 × 24	610 × 610 × 78/91	200	423	676	636	663	595	15	49	308	35	
680	680 × 54	610 × 610 × 78/91	200	423	676	636	663	595	15	49	308	35	

Product specific data TFC-SC00H for AIRNAMIC

All weights are net, without packaging

①	②	③	④	⑤	⑥	⑦	⑧	⑨	⑩	⑪	⑫	⑬	⑭
TFC	B × H × T	∅D	G ₁	K	M	J	L	F	S	G	kg		
600	535 × 535 × 78/91	200	423	598	561	563	520		49	308	32		
625	575 × 575 × 78/91	200	428	623	601	603	560		54	313	33		

Product specific data TFC-SCTN0

All weights are net, without packaging

①	②	③	④	⑤	⑥	⑦	⑧	⑨	⑩	⑪	⑫	⑬	⑭
TFC	VDW	B × H × T	∅D	G ₁	K	M	J	L	F	G	kg		
400	400 × 16	345 × 345 × 78/91	125	428	398	371	388	330	10	313	29		
500	500 × 24	435 × 435 × 78/91	160	423	498	461	488	420	15	308	33		
600	600 × 24	535 × 535 × 78/91	200	423	598	561	588	520	15	308	34		
625	625 × 24	575 × 575 × 78/91	200	428	623	601	618	560	10	313	35		
625	625 × 48	575 × 575 × 78/91	200	428	623	601	618	560	10	313	35		
680	680 × 24	610 × 610 × 78/91	200	423	676	636	663	595	15	308	37		
680	680 × 54	610 × 610 × 78/91	200	423	676	636	663	595	15	308	37		

Product specific data TFC-SCTN0 for AIRNAMIC

All weights are net, without packaging

①	②	③	④	⑤	⑥	⑦	⑧	⑨	⑩	⑪	⑫	⑬	⑭
TFC	B × H × T	∅D	G ₁	K	M	J	L	F	G	kg			
600	535 × 535 × 78/91	200	423	598	561	563	520		308	34			
625	575 × 575 × 78/91	200	428	623	601	603	560		313	35			

Product specific data TFC-SCBR0

All weights are net, without packaging

①	②	③	④	⑤	⑥	⑦	⑧	⑨	⑩	⑪	⑫	⑬	⑭
TFC	VDW	B × H × T	∅D	G ₁	K	M	J	L	F	G	kg		
400	400 × 16	345 × 345 × 78/91	125	428	398	371	388	330	10	313	29		
500	500 × 24	435 × 435 × 78/91	160	423	498	461	488	420	15	308	33		
600	600 × 24	535 × 535 × 78/91	200	423	598	561	588	520	15	308	34		
625	625 × 24	575 × 575 × 78/91	200	428	623	601	618	560	10	313	35		
625	625 × 48	575 × 575 × 78/91	200	428	623	601	618	560	10	313	35		
680	680 × 54	610 × 610 × 78/91	200	423	676	636	663	595	15	308	37		

Product specific data TFC-SCBR0 for AIRNAMIC

All weights are net, without packaging

①	②	③	④	⑤	⑥	⑦	⑧	⑨	⑩	⑪	⑫	⑬	⑭
TFC	B × H × T	∅D	G ₁	K	M	J	L	F	G	kg			
600	535 × 535 × 78/91	200	423	598	561	563	520		308	34			
625	575 × 575 × 78/91	200	428	623	601	603	560		313	35			

Product specific data TFC-SCVFL

All weights are net, without packaging

①	②		③	④	⑤	⑥	⑦	⑧	⑨			
TFC	VDW	B x H x T	∅D	G ₁	K	M	J	L	F	G	kg	
400	400 x 16	345 x 345 x 78/91	160	428	398	371	388	330	10	313	28	
500	500 x 24	435 x 435 x 78/91	200	423	498	461	488	420	15	308	32	
600	600 x 24	535 x 535 x 78/91	250	473	598	561	588	520	15	333	33	
625	625 x 24	575 x 575 x 78/91	250	478	623	601	618	560	10	338	34	
625	625 x 48	575 x 575 x 78/91	250	478	623	601	618	560	10	338	34	
680	680 x 24	610 x 610 x 78/91	250	473	676	636	663	595	15	333	36	
680	680 x 54	610 x 610 x 78/91	250	473	676	636	663	595	15	333	36	

Product specific data TFC-SCVFL for AIRNAMIC

All weights are net, without packaging

①	②		③	④	⑤	⑥	⑦	⑧	⑨		
TFC	B x H x T		∅D	G ₁	K	M	J	L	F	G	kg
600	535 x 535 x 78/91		250	473	598	561	563	520		333	33
625	575 x 575 x 78/91		250	478	623	601	603	560		338	34

Product specific data TFC-TC

All weights are net, without packaging

①	②		③	④	⑤	⑥	⑦	⑧	⑨			
TFC	VDW	B x H x T	∅D	G ₁	K	M	J	L	F	G	kg	
400	400 x 16	345 x 345 x 78/91	158	299	398	371	388	330	10	17		
400	400 x 16	345 x 345 x 78/91	198	299	398	371	388	330	10	17		
400	400 x 16	345 x 345 x 150	158	371	398	371	388	330	10	17		
400	400 x 16	345 x 345 x 150	198	371	398	371	388	330	10	17		
500	500 x 24	435 x 435 x 78/91	158	294	498	461	488	420	15	21		
500	500 x 24	435 x 435 x 78/91	198	294	498	461	488	420	15	21		
500	500 x 24	435 x 435 x 150	158	366	498	461	488	420	15	21		
500	500 x 24	435 x 435 x 150	198	366	498	461	488	420	15	21		
600	600 x 24	535 x 535 x 78/91	248	294	598	561	588	520	15	22		
600	600 x 24	535 x 535 x 78/91	313	294	598	561	588	520	15	22		
600	600 x 24	535 x 535 x 150	248	366	598	561	588	520	15	22		
600	600 x 24	535 x 535 x 150	313	366	598	561	588	520	15	22		
625	625 x 24	575 x 575 x 78/91	248	299	623	601	618	560	10	23		
625	625 x 24	575 x 575 x 78/91	313	299	623	601	618	560	10	23		
625	625 x 48	575 x 575 x 78/91	313	299	623	601	618	560	10	23		
625	625 x 24	575 x 575 x 150	248	371	623	601	618	560	10	23		
625	625 x 24	575 x 575 x 150	313	371	623	601	618	560	10	23		
625	625 x 48	575 x 575 x 150	248	371	623	601	618	560	10	23		
625	625 x 48	575 x 575 x 150	313	371	623	601	618	560	10	23		
680	680 x 24	610 x 610 x 78/91	248	294	676	636	663	595	15	23		
680	680 x 24	610 x 610 x 78/91	313	294	676	636	663	595	15	23		
680	680 x 54	610 x 610 x 78/91	248	294	676	636	663	595	15	23		
680	680 x 54	610 x 610 x 78/91	313	294	676	636	663	595	15	23		
680	680 x 24	610 x 610 x 150	248	366	676	636	663	595	15	23		
680	680 x 24	610 x 610 x 150	313	366	676	636	663	595	15	23		
680	680 x 54	610 x 610 x 150	248	366	676	636	663	595	15	23		
680	680 x 54	610 x 610 x 150	313	366	676	636	663	595	15	23		

Product specific data TFC-TC for AIRNAMIC

All weights are net, without packaging

①	②		③	④	⑤	⑥	⑦	⑧	⑨	
TFC	B x H x T		∅D	G ₁	K	M	J	L	F	kg
600	535 x 535 x 78/91		248	294	598	561	563	520		22
600	535 x 535 x 78/91		313	294	598	561	563	520		22
600	535 x 535 x 150		248	366	598	561	564	520		22
600	535 x 535 x 150		313	366	598	561	564	520		22
625	575 x 575 x 78/91		248	299	623	601	603	560		23
625	575 x 575 x 78/91		313	299	623	601	603	560		23
625	575 x 575 x 150		248	371	623	601	604	560		23
625	575 x 575 x 150		313	371	623	601	604	560		23

Product specific data TFC-SR

All weights are net, without packaging

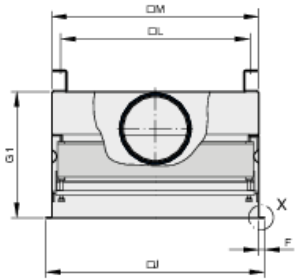
①	②		④	⑤	⑥	⑦	⑧	⑨					
TFC	VDW	B × H × T	G ₁	K	M	J	L	F	G	kg	A	n × t	E
400	400 × 16	345 × 345 × 78/91	299	398	371	388	330	10	249	17	418	3 × 131	401
400	400 × 16	345 × 345 × 150	371	398	371	388	330	10	321	17	418	3 × 131	401
500	500 × 24	435 × 435 × 78/91	294	498	461	488	420	15	244	21	508	3 × 161	491
500	500 × 24	435 × 435 × 150	366	498	461	488	420	15	316	21	508	3 × 161	491
600	600 × 24	535 × 535 × 78/91	294	598	561	588	520	15	244	22	608	4 × 146	591
600	600 × 24	535 × 535 × 150	366	598	561	588	520	15	316	22	608	4 × 146	591
625	625 × 24	575 × 575 × 78/91	299	623	601	618	560	10	249	23	648	4 × 156	631
625	625 × 48	575 × 575 × 78/91	299	623	601	618	560	10	249	23	648	4 × 156	631
625	625 × 24	575 × 575 × 150	371	623	601	618	560	10	321	23	648	4 × 156	631
625	625 × 48	575 × 575 × 150	371	623	601	618	560	10	321	23	648	4 × 156	631
680	680 × 24	610 × 610 × 78/91	294	676	636	663	595	15	244	23	683	4 × 165	666
680	680 × 54	610 × 610 × 78/91	294	676	636	663	595	15	244	23	683	4 × 165	666
680	680 × 24	610 × 610 × 150	366	676	636	663	595	15	316	23	683	4 × 165	666
680	680 × 54	610 × 610 × 150	366	676	636	663	595	15	316	23	683	4 × 165	666

Product specific data TFC-SR for AIRNAMIC

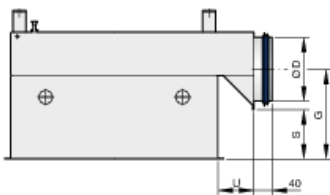
All weights are net, without packaging

①	②		④	⑤	⑥	⑦	⑧	⑨					
TFC	B × H × T		G ₁	K	M	J	L	F	G	kg	A	n × t	E
600	535 × 535 × 78/91		294	598	561	563	520		244	22	608	4 × 146	591
600	535 × 535 × 150		366	598	561	564	520		316	22	608	4 × 146	591
625	575 × 575 × 78/91		299	623	601	603	560		249	23	648	4 × 156	631
625	575 × 575 × 150		371	623	601	604	560		321	23	648	4 × 156	631

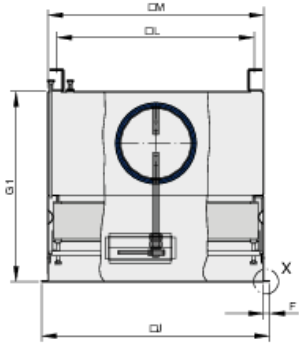
TFC-SC



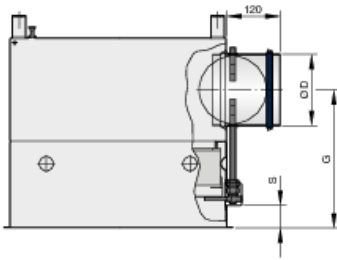
TFC-SC, side view



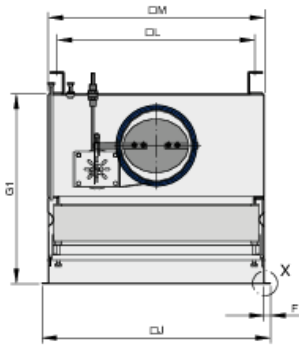
TFC-SC00H



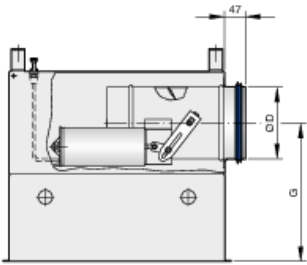
TFC-SC00H, side view



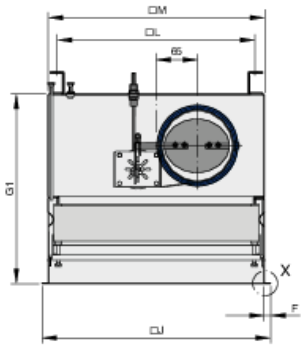
TFC-SCTN0



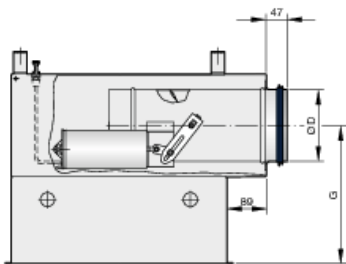
TFC-SCTN0, side view



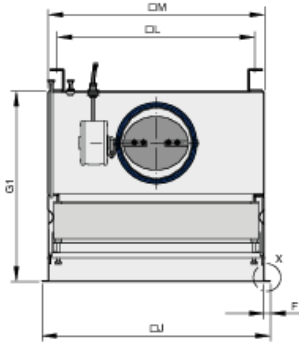
TFC-SCTN0, construction for filter size 345 × 345



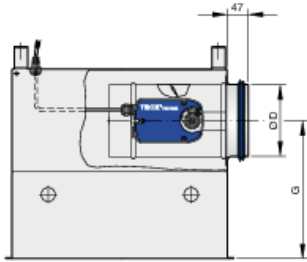
TFC-SCTN0, construction for filter size 345 × 345, side view



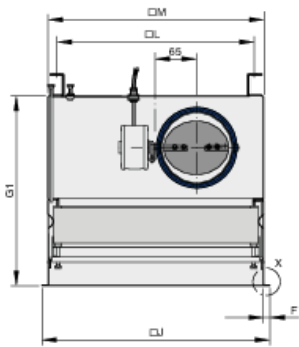
TFC-SCBR0



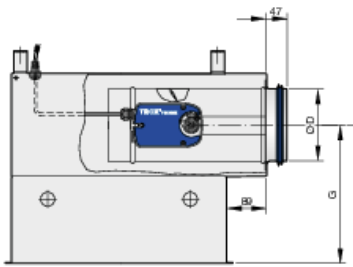
TFC-SCBR0, side view



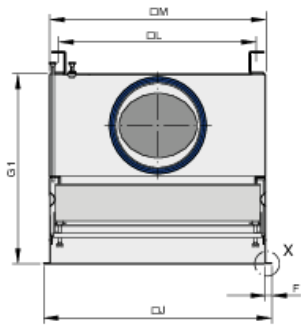
TFC-SCBR0, construction for filter size 345 × 345



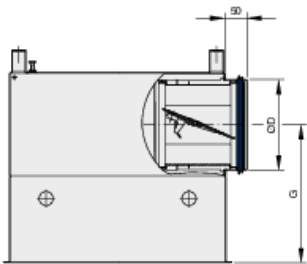
TFC-SCBR0, construction for filter size 345 × 345, side view



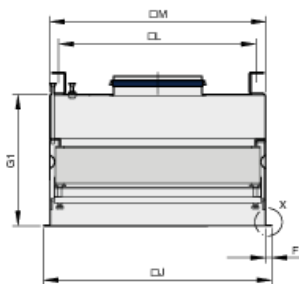
TFC-SCVFL



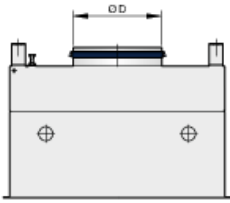
TFC-SCVFL, side view



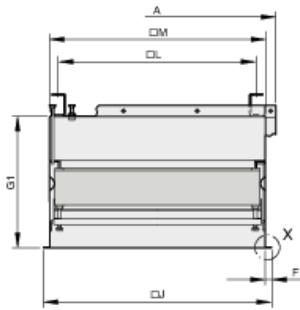
TFC-TC



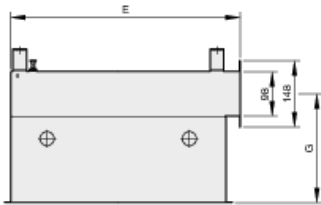
TFC-TC, side view



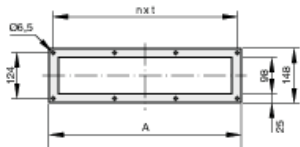
TFC-SR



TFC-SR, side view



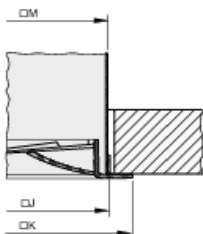
TFC-SR flange dimensions



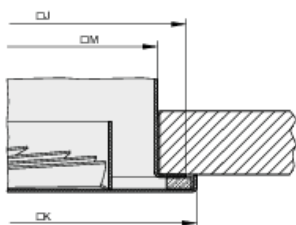
- Fitting of filter elements with flat seal or fluid seal
- The filter element is pressed into place using 2 or 4 (optional) easy-to-handle clamps
- Air terminal device with central fixing (to be provided by others)

...

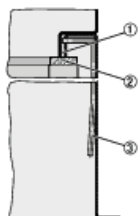
Detail X – AIRNAMIC air terminal device



Detail X – various air terminal devices

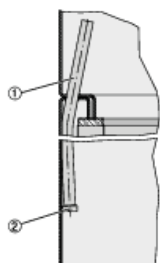


Sealing integrity test facility



- ① Test groove
- ② Filter seal
- ③ Connection for sealing integrity testing

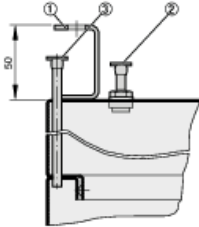
Internal measuring tube



- ① Measuring tube $\varnothing 8 \times 1.5$ mm
- ② Cheese head screw M6 x 10 mm

Top suspension and measurement points

...

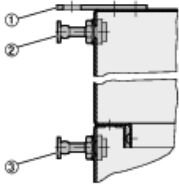


① Suspension

② Measurement point on upstream side (plus)

③ Measurement point on downstream side (minus)

Side suspension and measurement points

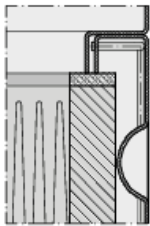


① Suspension

② Measurement point on upstream side (plus)

③ Measurement point on downstream side (minus)

Mini Pleat filter panels with flat seal



Mini Pleat filter panels with fluid seal

