

Type FDE



FOR HIGH VOLUME FLOW RATES, WITH FIXED AIR CONTROL BLADES

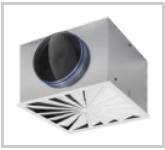
Square ceiling swirl diffusers

- Nominal sizes 600, 625
- Volume flow rate range 51 – 365 l/s or 184 – 1314 m³/h
- Diffuser face made of galvanised sheet steel, powder-coated
- For supply and extract air
- For variable and constant volume flows
- For all types of ceiling systems
- High induction results in a rapid reduction of the temperature difference and airflow velocity

Optional equipment and accessories

- Exposed diffuser face available in RAL CLASSIC colours

- Plenum box with cord-operated damper blade and pressure tap



Application

- Type FDE ceiling swirl diffusers are used as supply air or extract air diffusers for comfort zones
- Horizontal swirling supply air discharge for mixed flow ventilation
- The efficient swirl creates high induction levels, thereby rapidly reducing the temperature difference and airflow velocity (supply air variant)
- For variable and constant volume flows
- For supply air to room air temperature differences from -12 to $+10$ K
- For room heights up to 4.2 m (lower edge of suspended ceiling)
- For all types of ceiling systems

Special characteristics

- For high volume flow rates, with fixed air control blades
- High induction results in a rapid reduction of the supply air to room air temperature difference and airflow velocity
- For all types of ceiling systems
- Horizontal duct connection

Nominal sizes

- 600, 625

Variants

- FDE-Z: Supply air
- FDE-A: Extract air

Parts and characteristics

- Square diffuser face
- Diffuser face with radially arranged fixed air control blades
- Plenum box for supply air, with an optimised equalising element that ensures a uniform airflow through the diffuser face
- Simple installation of the diffuser face due to central fixing screw with decorative cap
- Damper blade for volume flow rate balancing (optional)

Attachments

- M: Damper blade for volume flow rate balancing
- MN: Pressure tap and cord-operated damper blade for volume flow rate balancing with the diffuser face in place

Accessories

- Lip seal

Construction features

- Spigot suitable for circular ducts to EN 1506 or EN 13180
- Spigot with groove for lip seal (if accessory lip seal has been ordered)

Materials and surfaces

- Diffuser face, perforated plate with border, plenum box and cross bar made of galvanised sheet steel
- Lip seal made of rubber
- Perforated plate and border dip coated RAL 9005, jet black
- Diffuser face powder-coated RAL 9010, pure white
- P1: Powder-coated, RAL CLASSIC colour

Standards and guidelines

- Sound power level of the air-regenerated noise measured according to EN ISO 5135

Maintenance

- Maintenance-free as construction and materials are not subject to wear
- Inspection and cleaning to VDI 6022

TEKNISK INFORMATION

Function, Technical data, Quick sizing, Specification text, Order code



Dimensions and weight, Product details



Lindpro AB



Berglundavägen 12C
SE-70236 Örebro
SVERIGE
Tel.: +46 (0) 19 12 37 40
Mobil: 070-587 27 25
Email: larsgoran@lindpro.se

Online tjänster

› [Kontakta oss](#)

Service

Lindpro AB

Tel.: +46 (0) 19 12 37 40

Mobil: 070-587 27 25

Email: larsgoran@lindpro.se