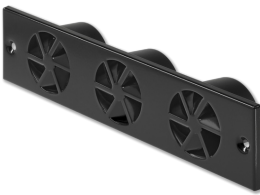




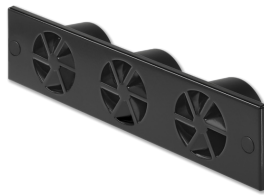
SDRF-K/3



SPRING CLIP FIXING



SCREW FIXING



FIXING SCREWS  
CONCEALED WITH  
DECORATIVE CAPS

## TYPE SDRF

### COMPACT HEIGHT, IDEAL FOR STEPS

Circular and rectangular staircase swirl diffusers

- Various nominal sizes with 1 – 6 outlets
- Volume flow rate range 2 – 25 l/s or 7 – 90 m<sup>3</sup>/h
- Diffuser face made of sheet steel, powder-coated
- For variable and constant volume flows
- For false floors designed as positive pressure plenums
- Installation into the risers of steps
- Visible screw fixing
- High induction results in a rapid reduction of the temperature difference and airflow velocity
- Low sound power level due to optimised air distribution inside the diffuser

Optional equipment and accessories

- Exposed diffuser face available in RAL CLASSIC colours
- Spring clip fixing (concealed)

## Application

### Application

- Type SDRF staircase swirl diffusers are primarily used as supply air diffusers for comfort conditioning applications
- For auditoriums in theatres, cinemas or concert halls
- Supply air discharge directly to the occupied zone
- Swirling air discharge for mixed flow ventilation
- The efficient swirl creates high induction levels, thereby rapidly reducing the temperature difference and airflow velocity (supply air variant)
- For variable and constant volume flows
- For supply air to room air temperature differences from –6 to +6 K
- For false floors designed as positive pressure plenums
- Installation into the risers of steps

### Special characteristics

- High induction results in a rapid reduction of the temperature difference and airflow velocity
- Air discharge parallel to the installation surface
- Excellent air quality since the supply air is discharged directly to the occupied zone
- Vertical installation into steps

### Nominal sizes

- No. of outlets: 1, 2, 3, 4, 5, 6

## Description

### Variants

- SDRF-K: Spring clip fixing

- SDRF-S: Screw fixing

#### Parts and characteristics

- Circular diffuser face with one outlet
- Rectangular diffuser face with two to six outlets
- Outlets with fixed blades and with flow-optimising cup; cup with perforated rear plate used as a damper element to improve air distribution if there are several outlets
- Fixing screws (with decorative caps) facilitate installing the diffuser face
- Optional spring clip fixing

#### Materials and surfaces

- Diffuser face made of sheet steel
- Cup made of ABS plastic, UL 94, V-0, flame retardant
- Cup similar to RAL 9005, black
- Exposed diffuser face powder-coated RAL 9005, jet black
- P1: Powder-coated, RAL CLASSIC colour

#### Standards and guidelines

- Sound power level of the air-regenerated noise measured according to EN ISO 5135

#### Maintenance

- Maintenance-free as construction and materials are not subject to wear
- Inspection and cleaning to VDI 6022

#### Lindpro AB

---

□

Berglundavägen 12C  
SE-70236 Örebro  
SVERIGE  
Tel.: +46 (0) 19 12 37 40  
Mobil: 070-587 27 25  
Email: [larsgoran@lindpro.se](mailto:larsgoran@lindpro.se)

#### Online tjänster

---

› [Kontakta oss](#)

---

#### Service

---

Lindpro AB

Tel.: +46 (0) 19 12 37 40

Mobil: 070-587 27 25

Email: [larsgoran@lindpro.se](mailto:larsgoran@lindpro.se)